

# MyProxy: Java WS client (1)

- <http://www.ngs.ac.uk/tools/certwizard>
- There you can find a Java Webstart based client "Certificate Management Wizard", which can upload a proxy without Globus installation.
- Also jar version is available (no browser then)
- It provides also proxy download feature
  - to use Java GSI-SSH Term is not needed

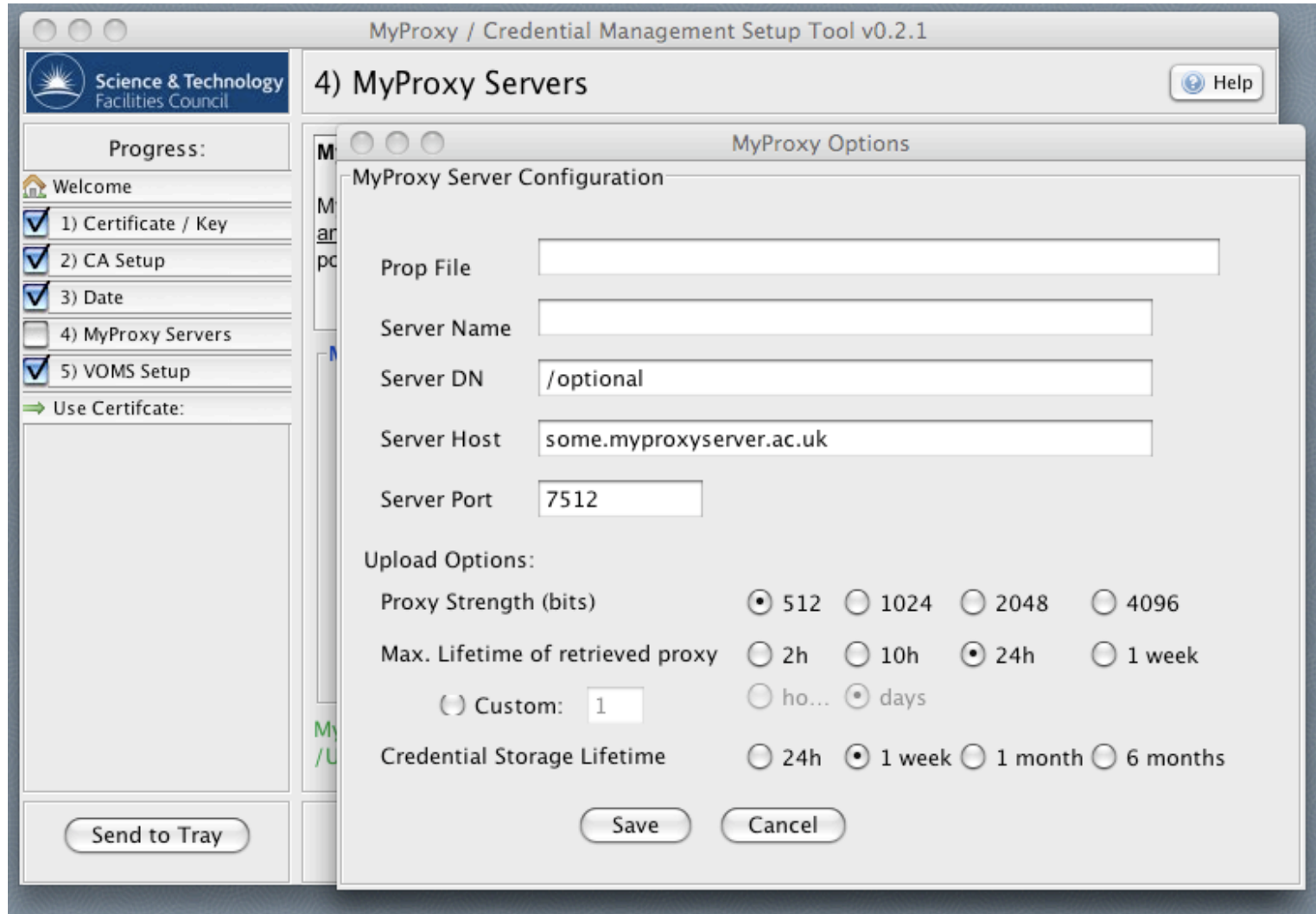
# MyProxy: Java WS client (2)

## Configuration (1)

- Configure in "4) MyProxy Servers" your MyProxy hosts.
- There you can select the default one.
- To add a new MyProxy server (screenshot on next slide)
  - Server Name (description) and Server Host (address) are required.
  - Server DN you can leave as `"/optional"`.
  - In that dialog you can set the lifetime values.

# MyProxy: Java WS client (3)

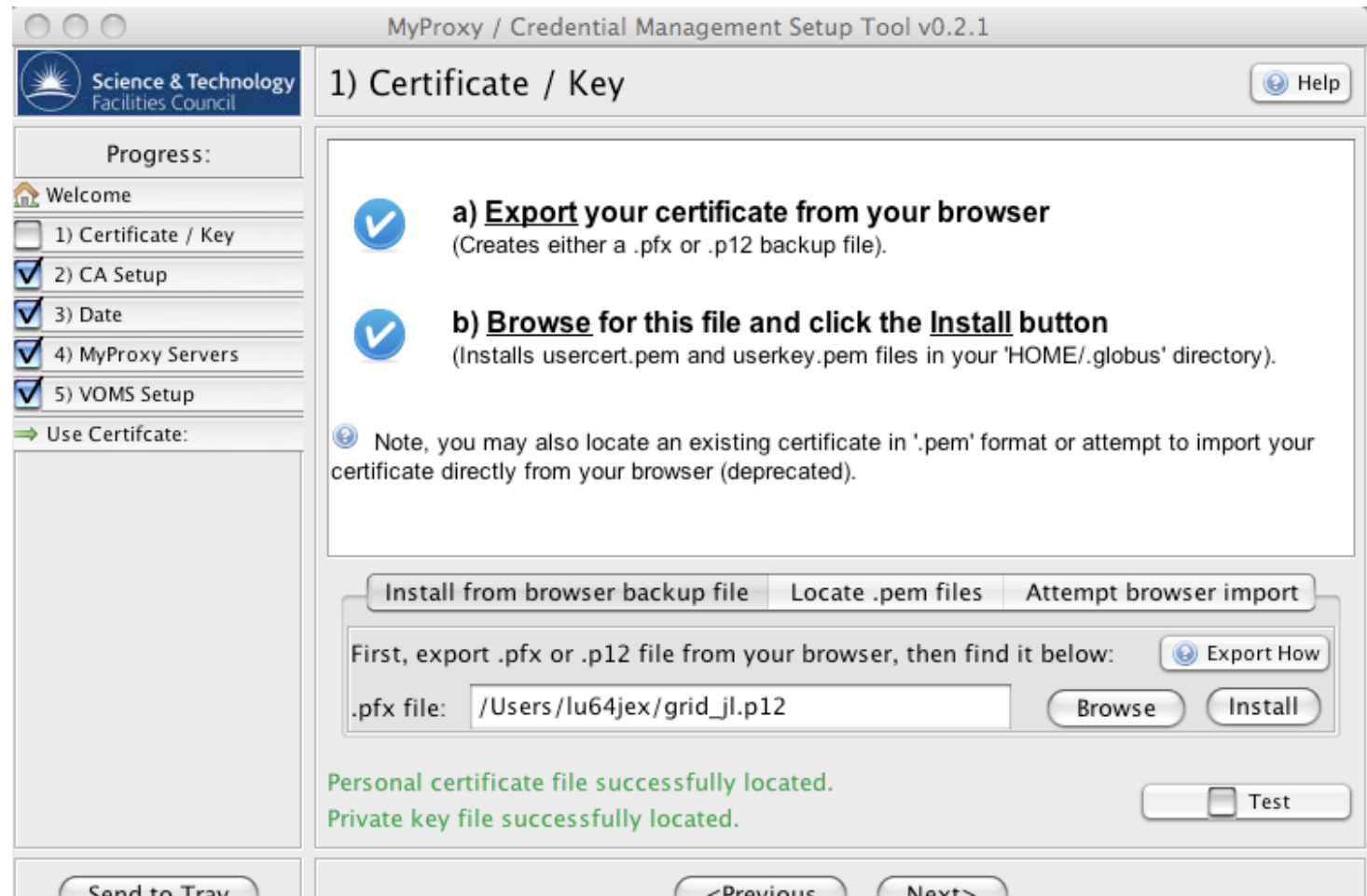
## Configuration (2)



To use LRZ maintained MyProxy server set Server Name and Server Host as: myproxy.lrz.de

# MyProxy: Java WS client (4) Configuration (3)

- After configuration of the MyProxy server, set your .pem or .p12 in "1) Certificate / Key" menu.



# MyProxy: Java WS client (5) Configuration (4)

- Then click "Use Certificate" and in MyProxy tab press Upload.
- It asks the Password and the Username.

